

VII 2. DIANE LEE GRAF b. 24 Apr 1958 Wed 25 May 1985 Daniel Joseph Terlep b. 1 Jan 1958. Diane graduated from Northern Illinois University and has been Chairperson of the Mathematics Dept. at McHenry County Community College for a number of years. Dan is a University of Illinois graduate who majored in Electrical Engineering. He has been with Motorola Corp. most of his working life. This couple are raising their children in Crystal Lake, Illinois. Grandpa Paul drives the 50 miles to their house from Sandwich almost every weekend.

VIII 1. ERIC DANIEL b. 14 Apr 1988
2. STACY LEE b. 3 Dec 1991

VI 2. DAVID EDWARD GRAF b. 24 Jan 1917 d. 1 Nov 2005. Wed 3 Sep 1939 Juanita Hyden b. 13 Apr 1916, d. 2005. David, as did Paul, worked at many jobs as a young person and graduated from the University of Illinois. He married his high school sweetheart and then went off to war. He served with the 90th Infantry Division in World War II participating in the D-Day invasion of Normandy, Utah Beach and was awarded the Silver Star, Purple Heart, Bronze Star and two Oak Leaf Clusters. He also was given the Croix de Guerre by the French government for the Saar River Crossing.

He became a Vocational Arts teacher at Sandwich High School and was honored in Washington with the 1968 National Teacher of The Year award by President Johnson. As a result of having a Downs Syndrome child, he and Juanita and another couple founded the Open Door Rehabilitation Center. This workshop for the mentally handicapped started out in the Graf's basement with a piecemeal order from a local company. The Center now does large amounts of assembly work in its own buildings and has several group homes where their clients learn independent living. Said the present-day director of Open Door. "I think Dave saw the ability inside the disability,"

Dave also founded the Indian Valley Vocational Center to aid students in Vocational Arts. His family spent their later years residing in Sun City, Arizona, still meeting challenges, still volunteering.

Dave is pictured below.



VII 1. CYNTHIA ANN GRAF b. 2 Jun 1944 d. 2000

VI 3. DOLORES GRAF ,daughter of Will and Pearl, b. 7 Sep 1923. Wed 10 Nov 1940
Emiel A. Banda b. 30 Jan 1921. Dolores was raised by her mother's sister and her
husband in the Los Angeles area, but Dolores was unaware they were not her parents until
she was retiring from work and checking on Social Security.

She then contacted her brothers in Illinois and has enjoyed becoming acquainted with the Grafs. She traveled to Illinois from California for a Graf get-together in the 1970s. Marilyn and Ben Rasmusen and Rose Marie Graf Winfield have visited Dolores and Emiel in their terraced home overlooking the Petaluma bay.

VII 1. GAIL BANDA b. 15 Aug 1941. Wed Pat Patterson

VIII. 1. VANCE PATTERSON b. 4 Jun 1964
2. LYNN PATTERSON b. 21 May 1965

VII 2. DALE BANDA b. 20 Sep 1954

3. DEL BANA b. 7 Dec 1957

V 5. GRACE ABIGAIL GRAF b. 11 Feb 1883 d. 6 Mar 1884 Grace died of diphtheria. The older children also had the disease. The doctor said, "These are sick but will live; however, the baby is critical." Grace had shown no symptoms that her mother had noticed, but she lived only a couple more days.⁶⁸

Burket Graf and Paul Graf have visited her grave in Beatrice, Nebraska as well as that of her older brother Edward.

V 6. HARRISON THEODORE GRAF b. 15 Nov 1884 d. 1952. Wed 6 Jun 1906
Ruby Riemensnider b. 7 June d. 2 Aug 1979. When Harrison was ten, his father Franklin sold his 160 acres of Nebraska land for \$50 an acre and the family moved back to the home farm in Illinois.

Many improvements had been made in the years since 1847 when Samuel and Louise-Anna first moved there from the cabin. A Spring House had been built over the spring which had determined the location of the farmstead. In Louise-Anna's youth it was a luxury to have a spring so close, and when her daughter-in-law Helen even had a shelter over the spring with a place to keep food cold, it must have seemed the highth of convenience.

The photo below is of an oil painted by Celia Hupach Graf, looking at the farmstead from the northeast. The white building on the right was the Spring House, also called the Cream House. The spring ran under the floor and containers of food were lowered to the cool water. Dora Graf Suppes remembered that the butter her mother made was put there in a footed, pressed glass compote, quite a different situation than 50 years before when Louise-Anna walked to the other spring.

The brick building with the weathervane was the Smoke House and the darker building at the center was a summer kitchen. When the Frank Grafs moved here in 1893, this building was joined to the house to make more living space. The stream in the foreground went west and then south with the farmyard nestled in the curve. The Graf children learned to skate on it. To the east of the house was a pretty grove with violets. Louise-Anna once told her grandchildren that the oak trees were small bushes when she was a young wife; she used to hang her wash over their branches.

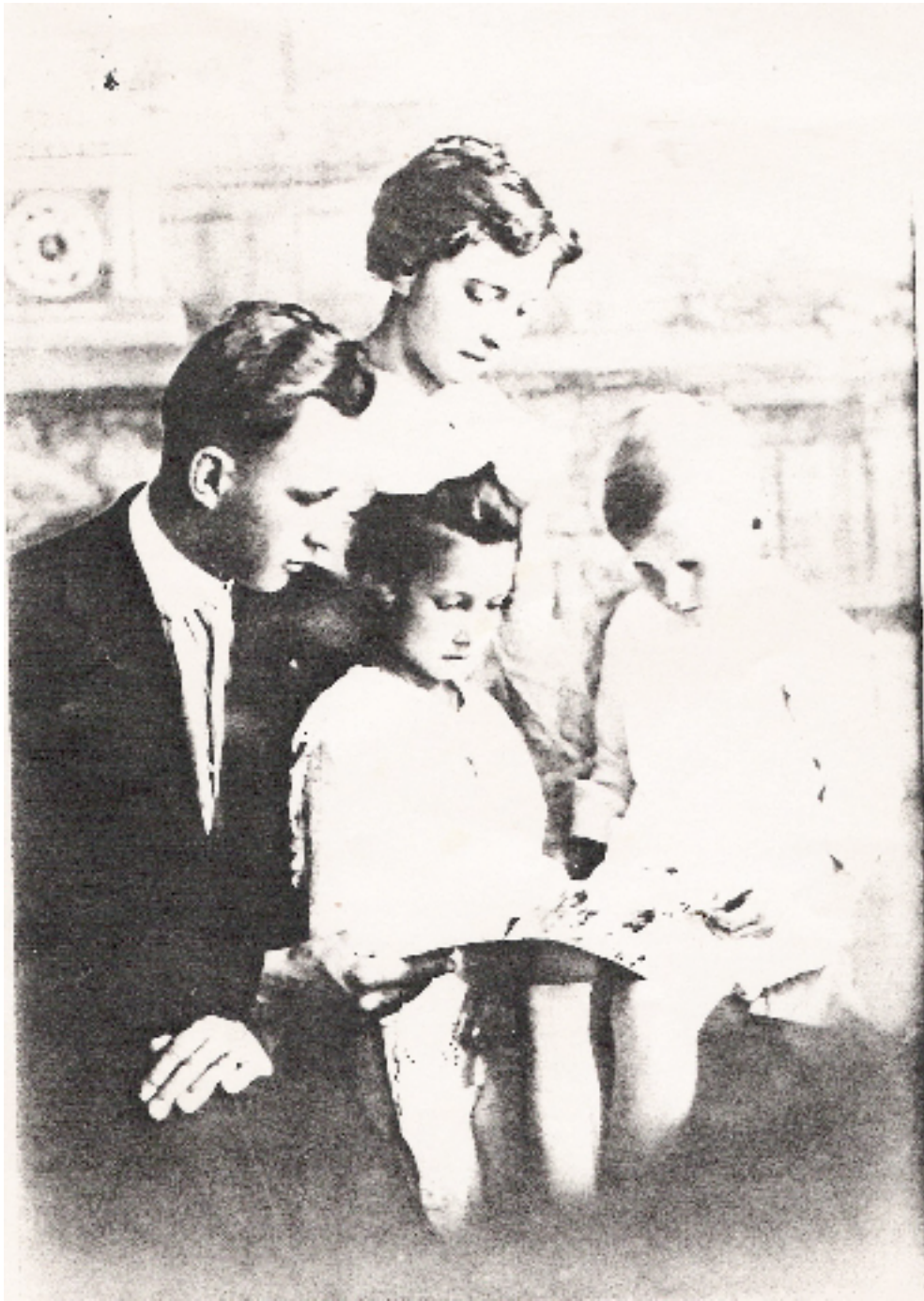
⁶⁸ Edna Graf Smith as told to Helen Smith Donoho



As a boy Harrison had a pony which he prized highly. He didn't get to ride it as often as he would have liked since teen-age farm boys had lots of work in those days. His sister Edna thought the pony was a fine steed. When Harrison would have to be helping in the fields, Edna would have a gallop. Harrison, thinking this a bit unfair, righted the situation thereafter by taking the pony with him to the field and tying the prized animal to the fence.

When Harrison and Ruby married, they farmed her family farm west of Somonauk. They were fun-loving people. A family story tells how cousin Herbert Graf was at their house once and he, being a good musician in the family was asked to play the piano and sing. He was wearing tails at the time, evidently having come from some public program. He flipped the tails up, sat down and began to play.

The family listened but Harrison, apparently bored by Herb's well-known sense of grandeur, signed to their pet bull dog to go after the tails. The performance was predictably disrupted, and almost everyone enjoyed the dog's playfulness. This was typical of Harrison's teasing.



Harrison Ruby Dorothy Franklin

Harrison had a dairy business at one time which delivered milk to Somonauk people with a horse and wagon. One of the men who worked for him, who had worked for many others, said that Harrison Graf was "the best boss I ever had".⁶⁹ The period in which he helped with

⁶⁹ Bill Stahl